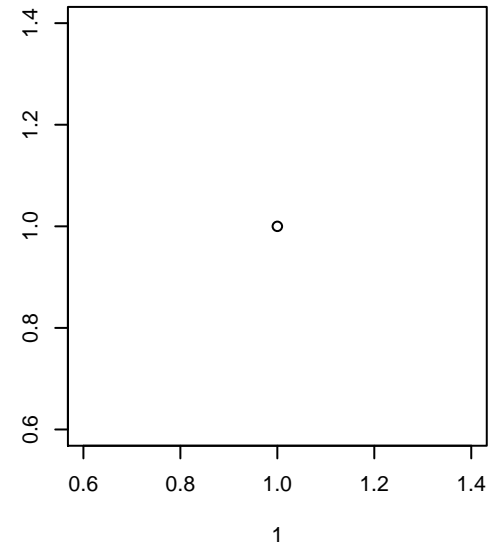


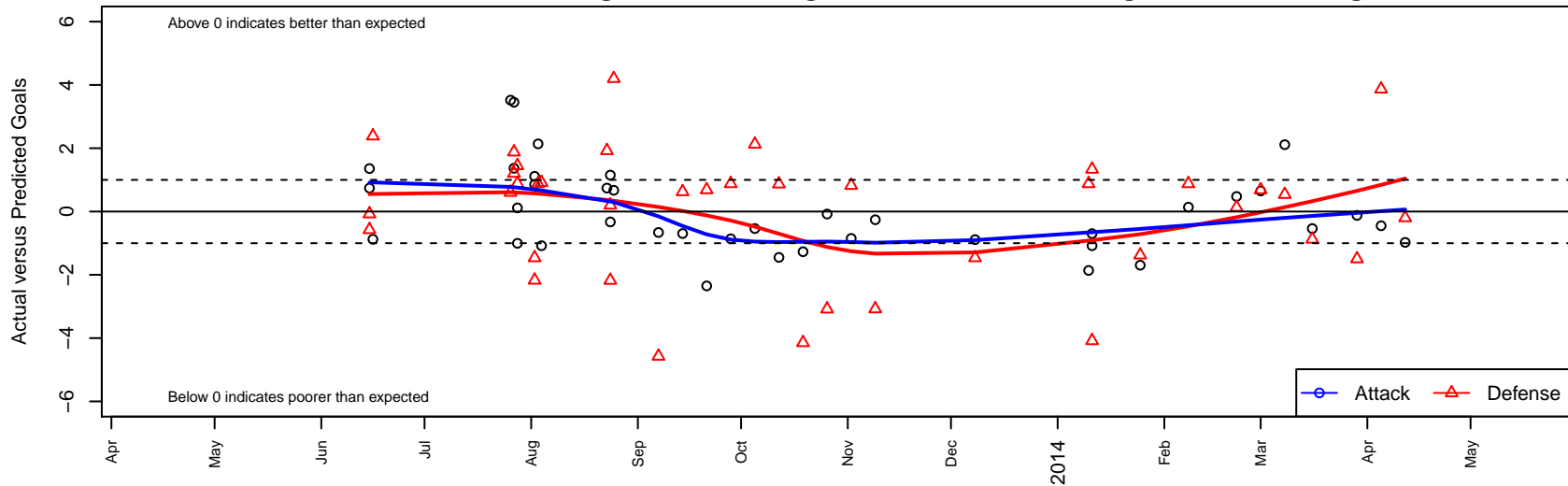
WA Rush Nero B00

Washington Rush SC
 Everett, WA
 B00 total strength=684
 attack=0.97 defense=0.46
 fall league = RCL B00 Div 4, Spr RCL B00 Div :
 alt names used:
 Washington Rush BU13 Nero 00
 WA Rush Swoosh B00
 WA Rush Swoosh
 Washington Rush B00 Swoosh
 Washington Rush B00 Swoosh 2013-14
 WASHINGTON RUSH BU13 NERO 00 (WA)
 17 WA RUSH BU13 NERO 00
 Washington Rush B00 Nero B
 WA RUSH BU13 NERO 00

Venues played:
 Skagit Firecracker Silver U13
 Crossfire Select Cup BU13 Silver
 WA Rush Cup BU13 Silver U13
 Puma Pacific Coast Challenge COPA U13
 RCL B00 Div 4
 PacNW Winter Classic Premier II U13
 Spr RCL B00 Div 5
 Challenge Cup B00 Division 2 - Challenge 2



WA Rush Nero B00
 Dots are actual minus expected GF (blue circles) and GA (red triangles).
 Blue line is smoothed change in attack strength. Red is smoothed change in defense strength.



| | date | home | | away | | venue | pred.home | pred.away |
|-------|------------|--------------------------|---|--------------------------|----|--|-----------|-----------|
| 26066 | 2014-04-12 | WA Rush Nero B00 | 0 | Kent United Green B00 | 4 | Challenge Cup B00 Division 2 – Challenge 2 | 0.97 | 3.80 |
| 25697 | 2014-04-05 | Slammers Orange B00 | 0 | WA Rush Nero B00 | 1 | Challenge Cup B00 Division 2 – Challenge 2 | 3.87 | 1.45 |
| 25460 | 2014-03-29 | FWFC Blue B00 | 5 | WA Rush Nero B00 | 1 | Challenge Cup B00 Division 2 – Challenge 2 | 3.50 | 1.12 |
| 25001 | 2014-03-16 | WA Rush Nero B00 | 2 | SSC Shadow B B00 | 3 | Spr RCL B00 Div 5 | 2.54 | 2.12 |
| 24055 | 2014-03-08 | WA Rush Nero B00 | 6 | FC Alliance C B00 | 1 | Spr RCL B00 Div 5 | 3.89 | 1.54 |
| 23542 | 2014-03-01 | Crossfire Premier D B00 | 0 | WA Rush Nero B00 | 7 | Spr RCL B00 Div 5 | 0.69 | 6.35 |
| 23066 | 2014-02-22 | FWFC White B00 | 1 | WA Rush Nero B00 | 4 | Spr RCL B00 Div 5 | 1.13 | 3.52 |
| 22315 | 2014-02-08 | WA Rush Nero B00 | 3 | PacNW White B00 | 0 | Spr RCL B00 Div 5 | 2.86 | 0.88 |
| 21749 | 2014-01-25 | Eastside FC Grey B00 | 4 | WA Rush Nero B00 | 1 | Spr RCL B00 Div 5 | 2.62 | 2.70 |
| 21148 | 2014-01-11 | WA Rush Nero B00 | 0 | Crossfire Premier C B00 | 3 | PacNW Winter Classic Premier II U13 | 0.70 | 4.33 |
| 21153 | 2014-01-11 | WA Rush Nero B00 | 0 | WPFC Navy B00 | 8 | PacNW Winter Classic Premier II U13 | 1.08 | 3.92 |
| 21054 | 2014-01-10 | PacNW White B00 | 0 | WA Rush Nero B00 | 1 | PacNW Winter Classic Premier II U13 | 0.88 | 2.86 |
| 20664 | 2013-12-08 | FC Alliance C B00 | 3 | WA Rush Nero B00 | 3 | RCL B00 Div 4 | 1.54 | 3.89 |
| 17798 | 2013-11-09 | Whatcom Rangers Blue B00 | 6 | WA Rush Nero B00 | 1 | RCL B00 Div 4 | 2.92 | 1.26 |
| 16848 | 2013-11-02 | WA Rush Nero B00 | 1 | Snohomish United Red B00 | 1 | RCL B00 Div 4 | 1.85 | 1.82 |
| 15972 | 2013-10-26 | WPFC Navy B00 | 7 | WA Rush Nero B00 | 1 | RCL B00 Div 4 | 3.92 | 1.08 |
| 15028 | 2013-10-19 | Blackhills FC Black B00 | 9 | WA Rush Nero B00 | 0 | RCL B00 Div 4 | 4.85 | 1.27 |
| 13987 | 2013-10-12 | WA Rush Nero B00 | 0 | Slammers Orange B00 | 3 | RCL B00 Div 4 | 1.45 | 3.87 |
| 12971 | 2013-10-05 | SSC Shadow B B00 | 0 | WA Rush Nero B00 | 2 | RCL B00 Div 4 | 2.12 | 2.54 |
| 12014 | 2013-09-28 | WA Rush Nero B00 | 2 | PacNW White B00 | 0 | RCL B00 Div 4 | 2.86 | 0.88 |
| 11075 | 2013-09-21 | WA Rush Nero B00 | 4 | Crossfire Premier D B00 | 0 | RCL B00 Div 4 | 6.35 | 0.69 |
| 10102 | 2013-09-14 | Eastside FC Grey B00 | 2 | WA Rush Nero B00 | 2 | RCL B00 Div 4 | 2.62 | 2.70 |
| 9154 | 2013-09-07 | WA Rush Nero B00 | 0 | BIFC Blue B00 | 11 | RCL B00 Div 4 | 0.66 | 6.43 |
| 8394 | 2013-08-25 | Whatcom Rangers Gold B00 | 3 | WA Rush Nero B00 | 1 | Puma Pacific Coast Challenge COPA U13 | 7.20 | 0.33 |
| 8046 | 2013-08-24 | Snohomish United Red B00 | 4 | WA Rush Nero B00 | 3 | Puma Pacific Coast Challenge COPA U13 | 1.82 | 1.85 |
| 8049 | 2013-08-24 | WA Rush Nero B00 | 0 | Whatcom Rangers Gold B00 | 7 | Puma Pacific Coast Challenge COPA U13 | 0.33 | 7.20 |
| 7707 | 2013-08-23 | WA Rush Nero B00 | 2 | Whatcom Rangers Blue B00 | 1 | Puma Pacific Coast Challenge COPA U13 | 1.26 | 2.92 |
| 5740 | 2013-08-04 | WPFC Navy B00 | 3 | WA Rush Nero B00 | 0 | WA Rush Cup BU13 Silver U13 | 3.92 | 1.08 |

| | date | home | | away | | venue | pred.home | pred.away |
|------|-------------|------------------------------|---|---------------------------|---|----------------------------------|------------------|------------------|
| 5485 | 2013-08-03 | PacNW White B00 | 0 | WA Rush Nero B00 | 5 | WA Rush Cup BU13 Silver U13 | 0.88 | 2.86 |
| 5246 | 2013-08-02 | PacNW Blue B00 | 5 | WA Rush Nero B00 | 2 | WA Rush Cup BU13 Silver U13 | 2.83 | 1.14 |
| 5248 | 2013-08-02 | FC Alliance C B00 | 3 | WA Rush Nero B00 | 5 | WA Rush Cup BU13 Silver U13 | 1.54 | 3.89 |
| 4989 | 2013-07-28 | WA Rush Nero B00 | 2 | NSC Dynamo B00 | 1 | Crossfire Select Cup BU13 Silver | 1.88 | 2.45 |
| 4993 | 2013-07-28 | Crossfire Select Button B00 | 4 | WA Rush Nero B00 | 0 | Crossfire Select Cup BU13 Silver | 4.88 | 1.00 |
| 4711 | 2013-07-27 | WA Rush Nero B00 | 5 | Impact FC Black B00 | 0 | Crossfire Select Cup BU13 Silver | 1.55 | 1.88 |
| 4719 | 2013-07-27 | Crossfire Select Buckley B00 | 0 | WA Rush Nero B00 | 4 | Crossfire Select Cup BU13 Silver | 1.21 | 2.63 |
| 4536 | 2013-07-26 | Fuerza FC Academy B00 | 2 | WA Rush Nero B00 | 6 | Crossfire Select Cup BU13 Silver | 2.60 | 2.48 |
| 1382 | 2013-06-16 | Seattle United W Blue B00 | 1 | WA Rush Nero B00 | 0 | Skagit Firecracker Silver U13 | 3.39 | 0.88 |
| 1160 | 2013-06-15 | WA Rush Nero B00 | 2 | Whatcom Rangers Blue B00 | 3 | Skagit Firecracker Silver U13 | 1.26 | 2.92 |
| 1162 | 2013-06-15 | WA Rush Nero B00 | 4 | Whatcom Rangers White B00 | 2 | Skagit Firecracker Silver U13 | 2.64 | 1.43 |